



GUELPH POLICE SERVICE 2025 ANNUAL REPORT



Territorial Acknowledgement

Let us take time to reflect on our privilege to live and work in Guelph, a city built over rich Indigenous histories. We are guests here and we should reflect upon the responsibility to care for this land, the people who live here today and the generations to come. If our actions today can move us towards reconciliation, we should take pause and make those decisions with intention and gratitude.

This place we call Guelph has served as traditional lands and a place of refuge for many peoples over time, but more specifically the Attiwonderonk and the Haudenosaunee. This land is held as the treaty lands and territory with the Mississaugas of the Credit First Nation. Guelph lies directly adjacent to the Haldimand Tract and is part of a long-established traditional hunting ground for the Six Nations of the Grand River. Many First Nations, Inuit and Métis peoples who have come from across Turtle Island call Guelph home today.



Table of Contents

Territorial Acknowledgement	02	Online Reporting	21
Your Police Service	04	Overview of Criminal Code Offences: Total Criminal Code.....	22
A Letter from the Chief of Police and Board Chair	05	Overview of Criminal Code Offences: Crimes Against the Person	23
Service at a Glance	06	Overview of Criminal Code Offences: Crimes Against Property.....	24
Organizational Structure	07	Overview of Criminal Code Offences: Traffic Violations	25
Staffing	08	Overview of Criminal Code Offences: Other Criminal Code Violations.....	26
Moving Forward Together	09	Controlled Drugs and Substances Act and Cannabis Act	27
Community Engagement	10	Cyber and Hate Crimes	28
Top Calls for Service	12	Human Trafficking	29
Service Quality	13	Motor Vehicle Collisions.....	30
Financial Indicators	14	Highway Traffic Act Offences	31
Provincial Grants	15	Annual Use of Force	32
Service Profile Pre-Charge Consultation Program	16	Annual Use of Force: Call Types.....	33
Service Profile Forensic Video Unit	17	Annual Use of Force: Perceived Subject Race	34
Service Profile Training	18	Annual Use of Force Comparison.....	35
Service Profile Next Generation 9-1-1	19	Use of Force: 2025 Incident Breakdown.....	36
Community Safety Operations Centre	20		

Accessible formats available upon request. Please contact the Media Unit at
519-824-1212 ext. 7190 or TTY 1-866-513-8062

Your Police Service

Our Mission

Through partnerships, we are dedicated to enhancing the quality of life and ensuring the safety of all who live, work, and play in our safe and diverse community.

Our Vision

To contribute to the positive growth and development of our members and our community by providing leadership and innovative policing that is effective, efficient, economical, and environmentally responsible.

Our Values

Pride in ourselves, our work, and our community.
Service with compassion and accountability.
Trust shared through integrity and mutual respect.

PRIDE  SERVICE  TRUST



A Letter from the Chief of Police and Board Chair



We are pleased to provide the Guelph Police Service 2025 Annual Report to our community highlighting Service activities, key indices of service quality and offering insight into how our members work each day to provide the highest level of service while striving to improve the safety and security of our residents. While remaining flexible and adaptable in meeting the evolving needs of our community, we continued to focus our efforts on achieving the priorities established in the 2024–2027 Strategic Plan.

Community Policing remained a foundational priority in 2025. Our members continued to engage meaningfully with residents, community groups and partners, maintaining and strengthening relationships across the city through education, outreach and collaborative initiatives. We know that every positive interaction builds trust and enhances our ability to respond effectively to community concerns.

Investigative Excellence was further advanced in 2025 through divisional realignments, targeted investments and expanded specialized capacity. With the support of our Board and City Council, additional resources were dedicated to addressing intimate partner violence and human trafficking. These investments supported complex investigations, proactive bail compliance checks, public education and victim support initiatives.

Road Safety continued to be a key strategic focus. This included a combination of education, public awareness initiatives and targeted enforcement. Our officers issued 7,712 Highway Traffic Act violation notices in 2025, representing a 58% increase over 2024. We are encouraged to report a 12.8% reduction in the rate of personal injury motor vehicle collisions reflecting the impact of focused enforcement and educational initiatives. Nevertheless, fatalities and serious injuries with traumatic consequences for members of our community continue to occur on our roads and we remain committed to increasing road safety.

We remained committed to being an active partner in enhancing the safety and vibrancy of our downtown. Our dedicated downtown resource officers, partnered with service sponsored CMHA clinicians, continued to support our downtown community including vulnerable individuals, residents, businesses and visitors to our downtown.

Modernization and service delivery enhancements progressed significantly throughout the year. The successful implementation of Next Generation 9-1-1 strengthened emergency response capabilities, reliability and resiliency. The Community Safety and Operations Centre (CSOC) completed its first full year of operation, providing efficient alternate responses to appropriate calls for service and supporting frontline capacity. These initiatives, combined with other operational improvements, contributed to a reduction in median response times for our highest-priority calls.

Our Police Service Board continued to provide governance, strategic direction and fiscal accountability on behalf of the community. Working collaboratively with the Chief of Police and Senior Leadership Team the Board ensured continued legislative compliance, service effectiveness and transparency under evolving policing frameworks.

We are grateful for the continued support of our community. We extend our sincere appreciation to our sworn and civilian members whose professionalism, commitment and resilience underpin the accomplishments reflected in this report. Their dedication is fundamental to keeping Guelph safe, inclusive and connected.

Sincerely,

A handwritten signature in black ink, appearing to be 'Gord Cobey', written over a horizontal line.

Gord Cobey, Chief

A handwritten signature in black ink, appearing to be 'Peter McSherry', written over a horizontal line.

Peter McSherry, Chair

Guelph Police Service at a Glance

The Guelph Police Service is proud to serve the people of Guelph - a safe and diverse community of approximately 160,000 residents. Working in partnership with the community and other agencies, our members respond to emergencies, investigate crime, support victims, help keep roads safe and focus on preventing harm where we can. We are a team of 243 sworn members and 117.5 civilian members, dedicated to enhancing quality of life and helping ensure the safety of all who live, work and play in Guelph.

It is an honour to serve this community. We strive to earn the trust of the people we serve by acting with integrity, treating people with dignity and respect and being accountable for our actions and investments.

We are committed to delivering innovative policing that is effective, efficient, economical and environmentally responsible as we continue to support the positive growth and development of our members and our community.



**117.5 Civilian
Members**

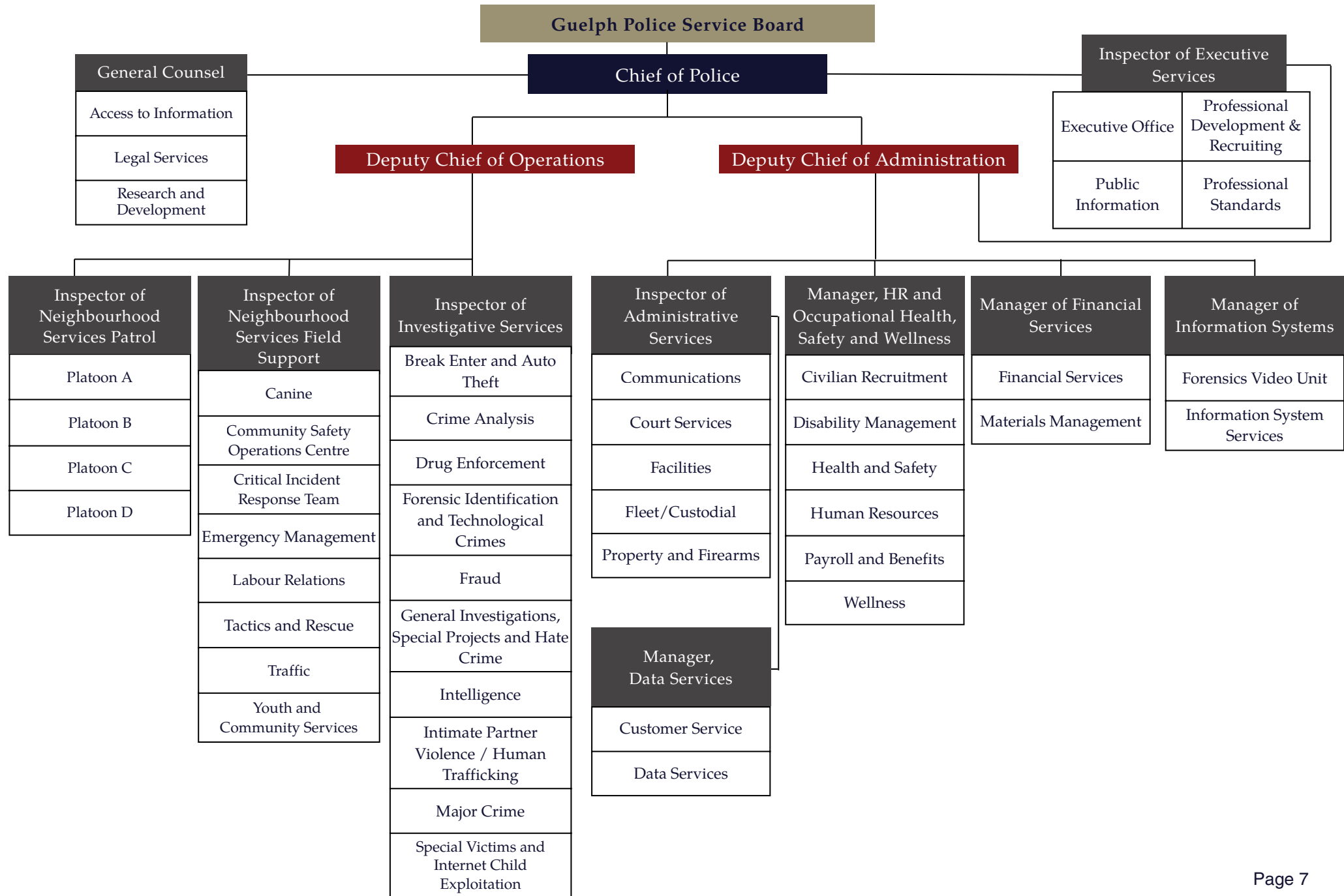


**243 Sworn
Officers**



**160,000
Residents**

Organizational Structure



Staffing



Authorized and Actual Personnel	2024		2025	
	Authorized	Actual	Authorized	Actual
Police Complement – Total	229.5	229.5	241.5	243
Chief of Police	1	1	1	1
Deputy Chief of Police	2	2	2	2
Inspectors	5	5	5	6
Staff Sergeants	10.5	10.5	10.5	11
Sergeants	28	29	29	28
Constables	183	182	194	195
Civilian Complement – Total	120.9	117.5	122.9	117.5
Senior Leadership/Administration	11	11	11	9
Special Constables - Courts & Custody	19.7	19	20	20
Maintenance and Fleet	7	7	7	7
Communications, Data Services, & Other Civilian	83.2	80.5	84.9	81.5
TOTAL (FTEs)	350.4	347	364.4	360.5

Moving Forward Together

The Guelph Police Service (GPS) is actively seeking dedicated individuals to join its ranks as police officers.

Currently, the GPS is accepting applications for the positions of New Constables and Experienced Officers. The recruitment process is comprehensive, involving multiple stages including interviews, fitness evaluations, psychological assessments, and thorough background checks.

The GPS also offers a variety of rewarding civilian opportunities. Civilian members play a vital role in helping GPS serve the community safely.

For those ready to apply, the application process is available online, and further information can be found on the GPS Careers page.

The GPS is committed to equitable treatment and aims to attract individuals of all backgrounds to consider a career in policing.

Visit guelphpolice.ca/careers to learn more.



Community Engagement and Internal Initiatives

Community Policing Webpage

The Guelph Police Service's Community Policing page promotes the value of community engagement and continues to be a key venue for building connections with the public. During 2025 we received more than 60 requests through the online portal to have officers attend community events, creating opportunities to attend and enjoy positive interactions with a wide range of community members.

GPS Family Fun Day

In May, 2025, the Guelph Police Service hosted our annual Family Fun Day in celebration of National Police Week. More than 400 community members visited the station to engage with our members and learn more about a wide variety of Guelph Police Service departments. Attendees checked out our cruisers, watched demonstrations including our canine unit and were able to get their fingerprints taken.

Recruiting Initiatives

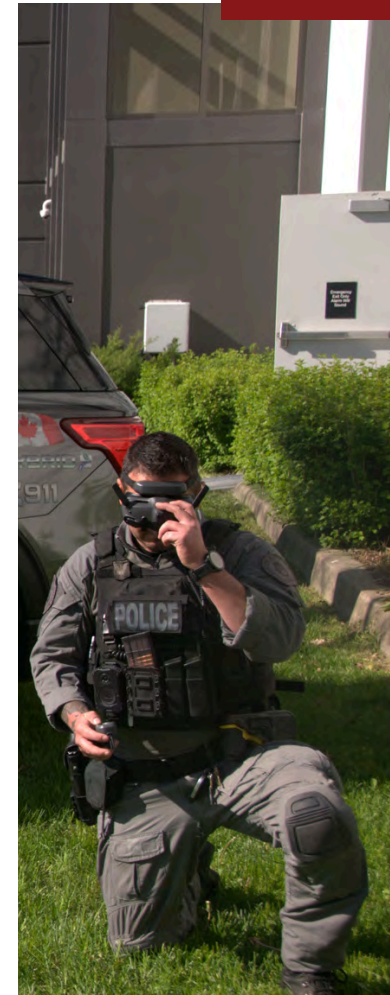
The Professional Development and Recruiting Unit was very active during 2025 in promoting the Guelph Police Service to prospective employees. Unit members attended 16 community events including recruiting fairs and information sessions to offer insights into the application process and career pathways at the Guelph Police Service.

They also hosted five practice Shuttle Run sessions welcoming nearly 40 participants. Our Recruiters' Corner platform continued to be well used with more than 100 participants connecting for a one-on-one discussion with a recruiter.

Media Initiatives

The Media Unit led all external communications for the service, issuing approximately 340 media releases, including daily updates, major incident reports and proactive crime trend alerts. Social media followers grew to more than 70,000 and content across all GPS platforms garnered more than 10 million views.

In December we launched a totally redesigned website to better inform and engage the community. We also continued our advertising campaign with the Guelph Storm, which saw 30-second commercials aired numerous times on the scoreboard during each of the OHL team's 34 home games.



Crime Prevention Through Environmental Design (CPTED)

Our Crime Prevention Through Environmental Design program allows property owners and tenants to request an assessment of their property by specially-trained officers. Officers use established CPTED principles to make properties less appealing to criminals. This service is offered following property-related calls for service and can be directly requested through our Community Policing page.

During 2025, free CPTED assessments were completed at approximately 50 residential and commercial properties across the city.

Community Engagement and Internal Initiatives



Road Safety Initiatives

The Guelph Police Service continued its commitment to road safety through proactive, data-informed initiatives that combined education, visibility and targeted enforcement. Officers engaged with residents through community events, school presentations, and public awareness campaigns focused on speeding, distracted driving, impaired driving and pedestrian and cyclist safety.

Citizens' Police Academies

In 2025 the Guelph Police Service hosted two Citizens' Police Academies open to members of the public interested in learning more about the Service. Approximately 80 residents participated during the two six-week sessions, hearing presentations on a wide variety of topics including human trafficking, internet child exploitation, fraud and emergency response to calls for service.

Youth in Policing Initiative

Funded in part by the Ministry of Children and Youth Services, our annual Youth In Policing Initiative (YIPI) provides Guelph high school students an opportunity to work for the Service for eight weeks each summer. These paid positions allow participants to learn about the Guelph Police Service while helping the community.

The 2025 YIPI cohort included six students from local high schools. The popular annual program strengthens youth engagement and fosters community leaders through hands-on learning and mentorship.

Community Events

The Guelph Police Service is committed to meaningful community engagement. In 2025, we participated in dozens of community events including the Special Olympics Track and Field Day, the Law Enforcement Torch Run for Special Olympics, Tim Hortons Camp Day, Dairy Queen Ice Cream Ticket Campaign, City of Guelph Emergency Preparedness Day, Sirens for Life blood donor campaign, Cram-A-Cruiser Food Drive, the Guelph and District Multicultural Festival, Cops and Kids Christmas campaign and many more.

KICKz Soccer Program

Since 2007 the KICKz Soccer Program has been a key youth engagement initiative, using sport to build trust, promote inclusion and strengthen relationships between police and young people.

Delivered in partnership with community organizations, the program provides barrier-free soccer programming where officers and youth participate together in a positive, supportive environment. KICKz fosters teamwork, leadership and open dialogue while creating meaningful connections that help break down barriers and support long-term community safety.

Top Calls for Service

In 2025, the Guelph Police Service managed 86,107 calls for service, including both emergency and non-emergency calls.

Behind each call is a team of skilled 9-1-1 call-takers and dispatchers who provide critical support in moments of need helping callers stay safe while coordinating timely responses from first responders.

Managing this demand requires ongoing coordination and thoughtful prioritization to ensure our resources are available when and where they are needed most.



➔ 86,107
Total Calls for Service 2025

➔ October
Busiest Month

➔ Friday
Busiest Day of the Week

Did you know?

Every member of our Communications Unit receives more than 300 hours of in-service training / live coaching before they take calls on their own!

Service Quality



	2024	2025	% Variance
Priority 1 Calls for Service			
Number of Priority 1 Calls for Service	1,049	914	-12.8%
Median Response Time, Priority 1 Calls (minutes:seconds)	6:38	5:59*	-9.8%
Use of Force			
Number of Incidents	89	104	16.9%
Levels of Force Used	150	213	42.0%
Public Complaints			
Total Complaints	54	53	-1.9%
Public Complaints - Resolutions			
Withdrawn	3	6	100.0%
Unsubstantiated	6	7	16.7%
Early Resolution	6	2	-66.6%
Informal Discipline	1	1	0.0%
Misconduct Hearing	0	0	-
Not Proceeded to Investigation	38	35	-7.9%
Terminated by OIPRD/LECA	0	0	-
OCCPS/OIPRD Appeals	4	1	-75.0%
Decisions Upheld	4	1	-75.0%
Street Checks (i.e. Regulated Interactions)			
Attempted Collections	3	0	-
Joint Forces Operations and Internal Task Forces	0	0	-
Projects Resulting in Charges	0	0	-
Legal Services			
Freedom of Information (FOI) Requests Processed	461	623	35.1%
Data Services			
Number of Record Checks	11,182	10,347	-7.5%
Volunteer Clearance	3,346	3,159	-5.6%
Non-Volunteer Clearance	7,836	7,188	-8.3%

*Lowest median response time since 2014

Financial Indicators

Human Resources	2024	2025
Population, City of Guelph	159,009*	160,109*
Authorized Personnel (FTEs)	350.4	364.4
Actual Personnel (FTEs)	347	360.5
Authorized Police Officers (FTEs)	229.5	241.5
Police Officer: Population Ratio (Actual constables, sergeants and staff sergeants)	1:718	1:686
Authorized Constables	183	194
Actual Constables	182	195
Overtime	2024	2025
Overtime (hours)	36,521	25,524
Overtime per Member (hours)	105	71
Overtime Paid (hours)	28,588	19,684
Overtime Paid (%)	78	77
Cost of Overtime Paid (\$)	\$1,624,323*	\$1,461,236

*Estimate derived from Statistics Canada figures

**Revised from 2024 Annual Report to reflect new reporting method, including additional costs of overtime

Sick Time / Injury on Duty	2024	2025
Sick Time (hours)	20,896	23,804
Sick Time per Member (FTEs) (hours)	60	66
Injured on Duty (hours)	10,597	18,849
Injured on Duty per Member (FTEs) (hours)	31	52
Selected Cost Recovery	2024	2025
Alarm Fees	\$113,271	\$124,915
Police Record Checks	\$451,056	\$431,367
Financial and Material Resources	2024	2025
Net Approved Budget	\$61,399,520	\$67,222,764
Net Operating Expenditures	\$61,154,449	\$65,667,016
Policing Cost per Capita (Operating Expenditures)	\$385	\$410

As part of its commitment to fiscal responsibility and effective service delivery, the Guelph Police Service actively seeks external funding opportunities to support priority programs, services and infrastructure. Provincial grants play an important role in enhancing community safety, strengthening partnerships and addressing emerging and complex community needs - while reducing the financial impact on local taxpayers. We are appreciative of the funding received from the Ministry of the Solicitor General in support of these initiatives / programs.

In 2025, the Guelph Police Service received funding through several provincial grant programs aligned with both community and provincial priorities. While not an exhaustive inventory, the grants outlined below highlight key investments that supported crime prevention, victim services, public safety modernization and collaborative responses to mental health, violence prevention and community well-being.

◆ Proceeds of Crime Grant

Assets seized by the provincial and federal governments during criminal prosecutions to help the police carry out specific crime prevention projects in the community.

◆ Preventing Auto Theft Grant

Helping police services combat and prevent auto theft, while protecting communities and keeping people and their property safe.

◆ Protect Children from Sexual Abuse and Exploitation on the Internet

Funding police services to help protect children from online exploitation.

◆ Ontario's Strategy to End Human Trafficking

Police services are eligible to receive funding to combat human trafficking.

◆ Next Generation 9-1-1

In partnership with the City of Guelph, funding to upgrade infrastructure and technology to enable safer, faster and more informed emergency response.

◆ Victim Support Grant (VSG)

Funding to build resources and address the needs of victims and survivors of intimate partner / domestic violence, human trafficking and/or child exploitation.

◆ Reduce Impaired Driving Everywhere Grant

Funding to enhance regular RIDE spot-check activities.

◆ Community Safety and Policing Grant

Enhancing the effectiveness and efficiency of police response to mental health occurrences by pairing officers with mental health professionals.

Service Profile

Pre-Charge Consultation Program

The Guelph Police Service demonstrates leadership in modern, accountable policing through its Pre-Charge Consultation Program - the first formally embedded model of its kind in Ontario. Developed in partnership with the Ministry of the Attorney General, the program allows investigators to consult directly with embedded Crown Counsel before charges are laid.

This real-time consultation provides early guidance on evidentiary thresholds, charge selection and disclosure considerations to strengthen file quality, promote consistency and support sound, evidence-based charging decisions. The program enhances accountability and transparency while respecting the independence of both police and prosecutors, contributing to a more timely and effective criminal justice process.

Since its implementation, the program has positioned the Guelph Police Service as a provincial leader in justice system innovation and an emerging best practice referenced across Ontario.



Service Profile

The Forensic Video Unit

The Forensic Video Unit (FVU) plays a critical role in managing the Service's rapidly growing volume of digital evidence. While evidence management has always been a core responsibility, the shift toward digital evidence has transformed how information is secured, reviewed and disclosed.

The FVU is responsible for the secure intake, review, editing, redaction, quality control and disclosure of digital evidence from sources such as body-worn and in-car cameras, CCTV systems, interview rooms and other media sources. This centralized approach ensures accurate, consistent and timely disclosure while significantly reducing the administrative burden on frontline officers and investigators.

In 2025, the unit reviewed and edited more than 15,000 hours of video highlighting both the scale of modern digital evidence and the Service's ongoing commitment to transparency and accountability. The FVU also provides specialized forensic video support to investigations including clarification and enhancement of video evidence.

Given the challenging nature of the material reviewed, FVU members participate in regular mental health and wellness safeguarding to support their wellbeing while maintaining high-quality service delivery.



Service Profile

Training

Ongoing training and professional development are essential to effective policing and public safety in Guelph. The Service's Training Unit delivers modern high-quality, contemporary training to ensure officers are equipped with the skills required to meet evolving community needs.

Our officers complete a minimum of 60 hours of annual training, reinforcing critical competencies such as de-escalation, mental-health response, active threat response, lawful use of force and police vehicle operations. The Training Unit also provides timely updates on legislative changes, policy requirements and emerging investigative practices and technologies.

Newly hired officers complete a minimum of 30 weeks of blended training through the Ontario Police College and the Service, combining academic learning with scenario-based instruction. Training is delivered through flexible formats, including e-learning, classroom instruction, virtual reality and practical exercises, helping maintain operational readiness while minimizing impacts on daily service delivery.

Did you know?

30 weeks

The minimum training requirement for new officers is 30 weeks of blended learning.

60 hours

Each deployed officer completes a minimum of 60 hours of training every year





Service Profile

Next Generation 9-1-1 (NG911)

In 2025, the Guelph Police Service advanced the implementation of **Next Generation 9-1-1 (NG911)**, a national modernization initiative that strengthens how the community connects with emergency services. This work enhances the reliability and resilience of 9-1-1 operations while positioning the Service to respond to evolving technology and increasing call volumes.

NG911 improves call routing and system resilience, helping to ensure faster and more consistent access to emergency assistance. In 2025, the Communications Unit received more than 127,000 calls, making reliable and efficient emergency communications essential. Enhanced tools also support clearer information capture and improved coordination with partner agencies during multi-service responses.

As NG911 capabilities continue to expand nationally, the Service is well-positioned to adopt future enhancements that strengthen accessibility, responsiveness and public trust in emergency communications.

Did you know?

The transition to NG911 in 2025 concluded a multi-year project and included more than 291 hours of training.

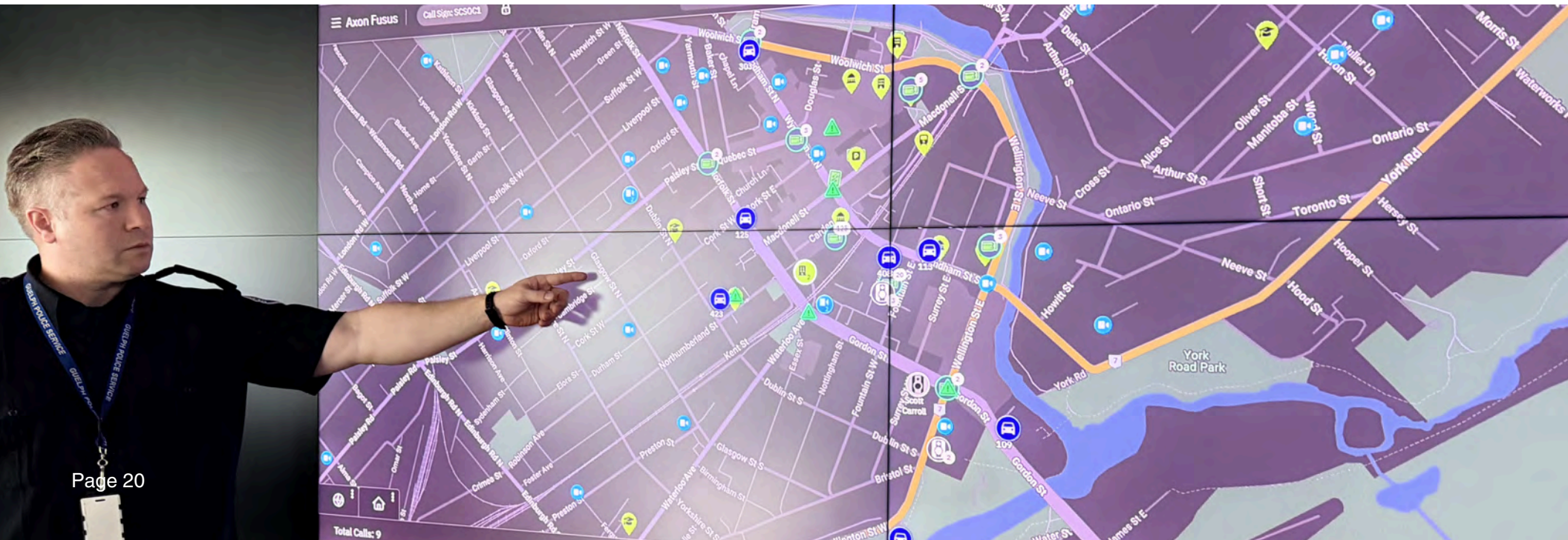
Community Safety Operations Centre (CSOC)

The Community Safety Operations Centre (CSOC) completed its first full year of operation in 2025 supporting public safety through enhanced response to active incidents, improved investigative efficiency and an alternate response model for non-emergency calls.

By managing non-emergency calls, the CSOC increased frontline officer availability for higher-priority incidents and contributed to reduced response times for the most urgent calls compared to 2024. The scope of incidents handled by the CSOC expanded in 2025 to further improve operational efficiency.

The CSOC is a central component of the Connect Guelph program. As a result of this initiative, more than 400 citizens have chosen to voluntarily register their cameras with our Service. While police do not have direct access to these cameras, knowing where cameras are located allows officers to quickly determine whether private camera systems may have captured relevant incident footage. In 2025, the CSOC also onboarded its first private enterprise partner.

Throughout the year the CSOC also hosted public-safety stakeholders from across North America, showcasing the centre as an innovative and effective model of modern police service delivery.



Online Reporting

Benefits of Online Reporting

Online reporting makes it easier for members of the Guelph community to share information about non-urgent incidents from anywhere, at any time.

It's a secure and efficient alternative that supports public safety by helping the Guelph Police Service identify trends and direct resources where they're needed most.

24/7
Access

Submitting an Online Report

After you submit your report, you'll receive a temporary reference number to confirm it was received. Once an officer has reviewed and accepted the report, you will be issued an official occurrence number for your records.

To submit a report or learn more, visit our Non-Emergency Reporting page at guelphpolice.ca/reportonline.

10+ Eligible
Call Types

1570 online reports were made in 2025

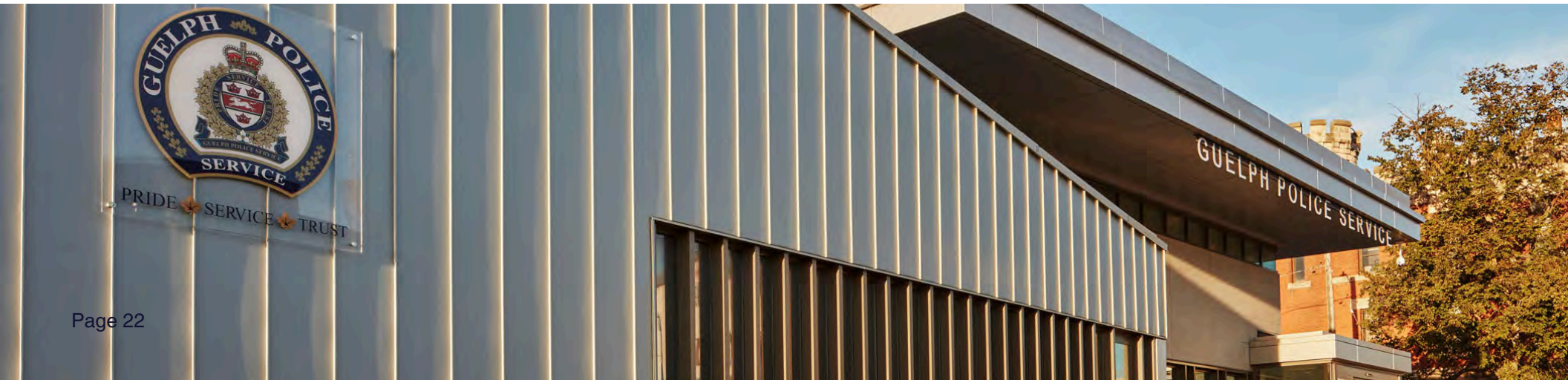
Online reporting is not meant to replace other forms of reporting crime.

- ➡ In emergencies, call 9-1-1
- ➡ Non-emergency line: 519-824-1212

Overview of Criminal Code Offences

Total Criminal Code (Excluding Traffic)

	2024	2025
Number of Occurrences	7,788	8,099
Occurrence Rate / 100,000 pop.	4,897.8	5,058.6
Number Unfounded	113	81
Clearance - Number Cleared by Charge / Cleared Otherwise	4,039	3,926
Clearance Rate	51.8%	48.5%

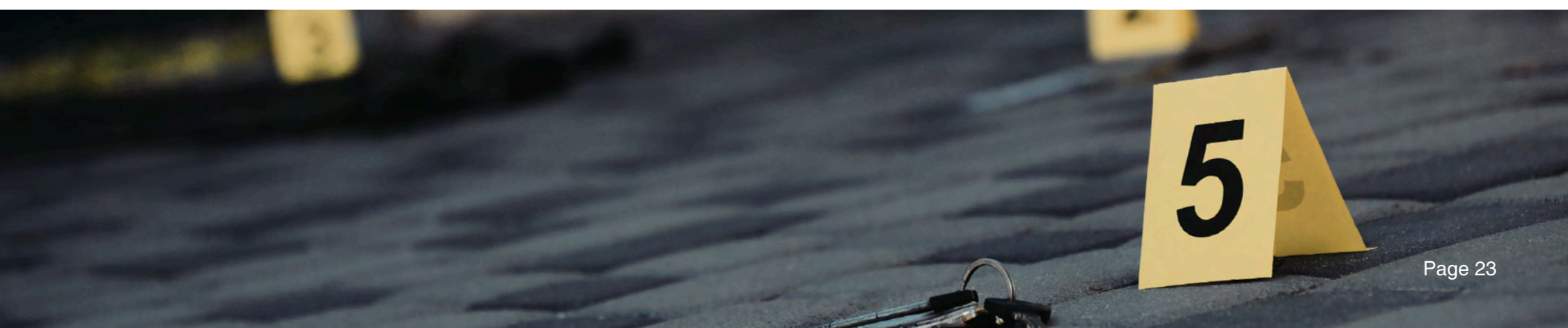


Overview of Criminal Code Offences

Crimes Against the Person

	2024		2025		% Variance	
	# Occurrences	Occurrence Rate / 100,000 pop.	# Occurrences	Occurrence Rate / 100,000 pop.	Occurrence Rate	Clearance Rate
Crimes Against the Person	1,741	1,094.7	1,760	1099.3	0.4%	1%
Murder	2	1.3	1	0.6	-53.8	0%
Attempted Murder	5	3.1	4	2.5	-19.4%	0%
Sexual Violations	211	132.7	263	164.3	23.8%	-6%
Assaults / Firearm related offences	839	527.6	845	527.8	0%	0.9%
Robbery	52	32.7	36	22.5	-31.2%	-15.4%

*Table represents selected categories and is not a total accounting of all crimes against the person.

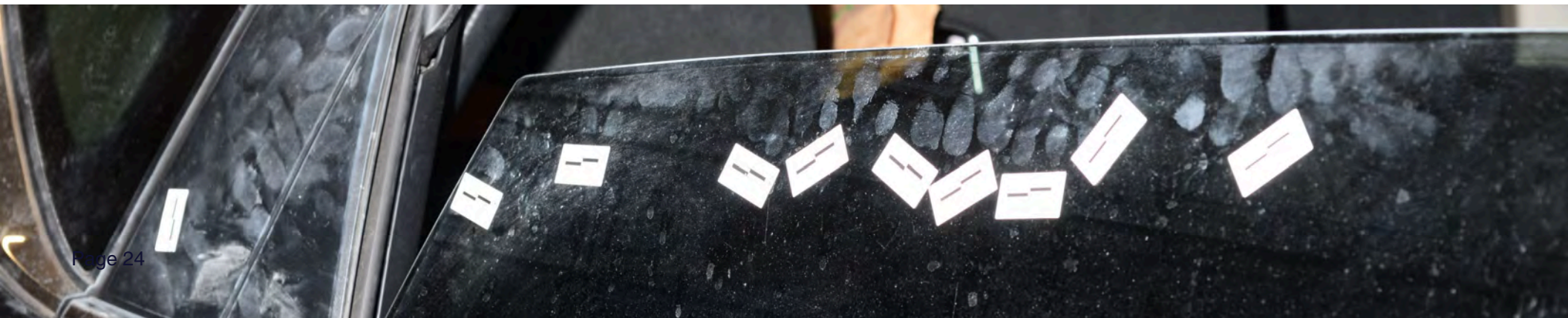


Overview of Criminal Code Offences

Crimes Against Property

	2024		2025		% Variance	
	# Occurrences	Occurrence Rate / 100,000 pop.	# Occurrences	Occurrence Rate / 100,000 pop.	Occurrence Rate	Clearance Rate
Crimes Against Property	4,332	2,723.9	4,616	2,901.90	6.5%	-13.2%
Arson	14	8.8	19	11.9	35.2%	84.2%
Break and Enter	340	213.8	379	236.7	10.7%	-14.5%
Theft	2,388	1,501.6	2,475	1,545.9	2.9%	-27.7%
Fraud	848	533.2	860	537.2	0.7%	-13.1%
Mischief	645	405.6	730	456	12.4%	-10.6%

*Table represents selected categories and is not a total accounting of all crimes against property.



Overview of Criminal Code Offences

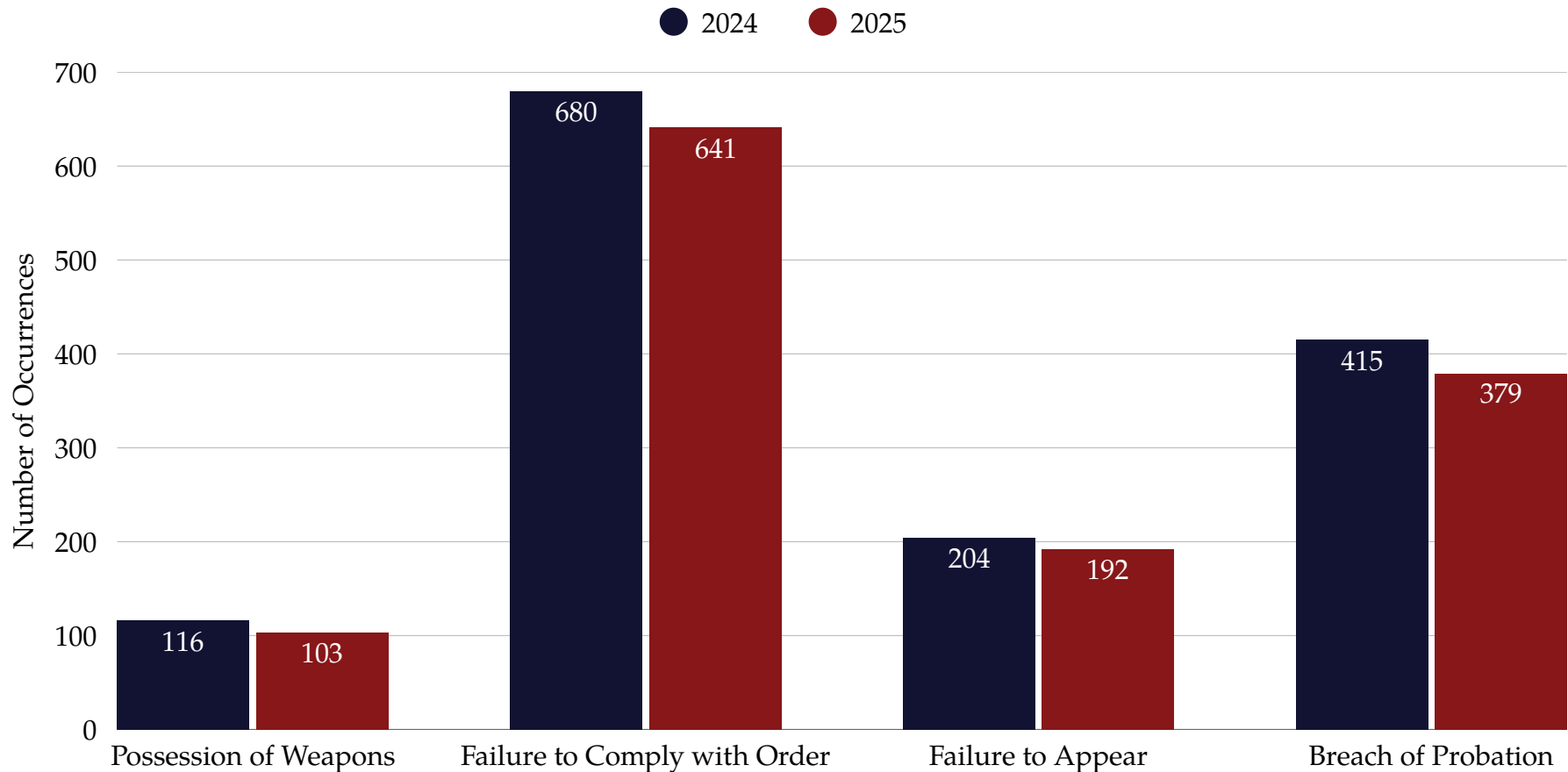
Traffic Violations

	2024				2025				% Variance	
	Occurrences		Clearance		Occurrences		Clearance		Occurrence Rate	Clearance Rate
	Number	Rate / 100,000 pop.	Number	Rate	Number	Rate / 100,000 pop.	Number	Rate		
Criminal Code Traffic Violations	234	147.2	234	100%	286	178.6	286	100%	21.3%	0.0%
Dangerous Operation	36	22.6	36	100%	59	36.9	59	100%	63.3%	0.0%
Operating while Impaired / Low Blood Drug Concentration Violations	121	76.1	121	100%	141	88.1	141	100%	15.8%	0.0%
Failure to Stop after Accident	22	13.8	22	100%	15	9.4	15	100%	-31.9%	0.0%
Operation while Prohibited	28	17.6	28	100%	37	23.1	37	100%	31.2%	0.0%



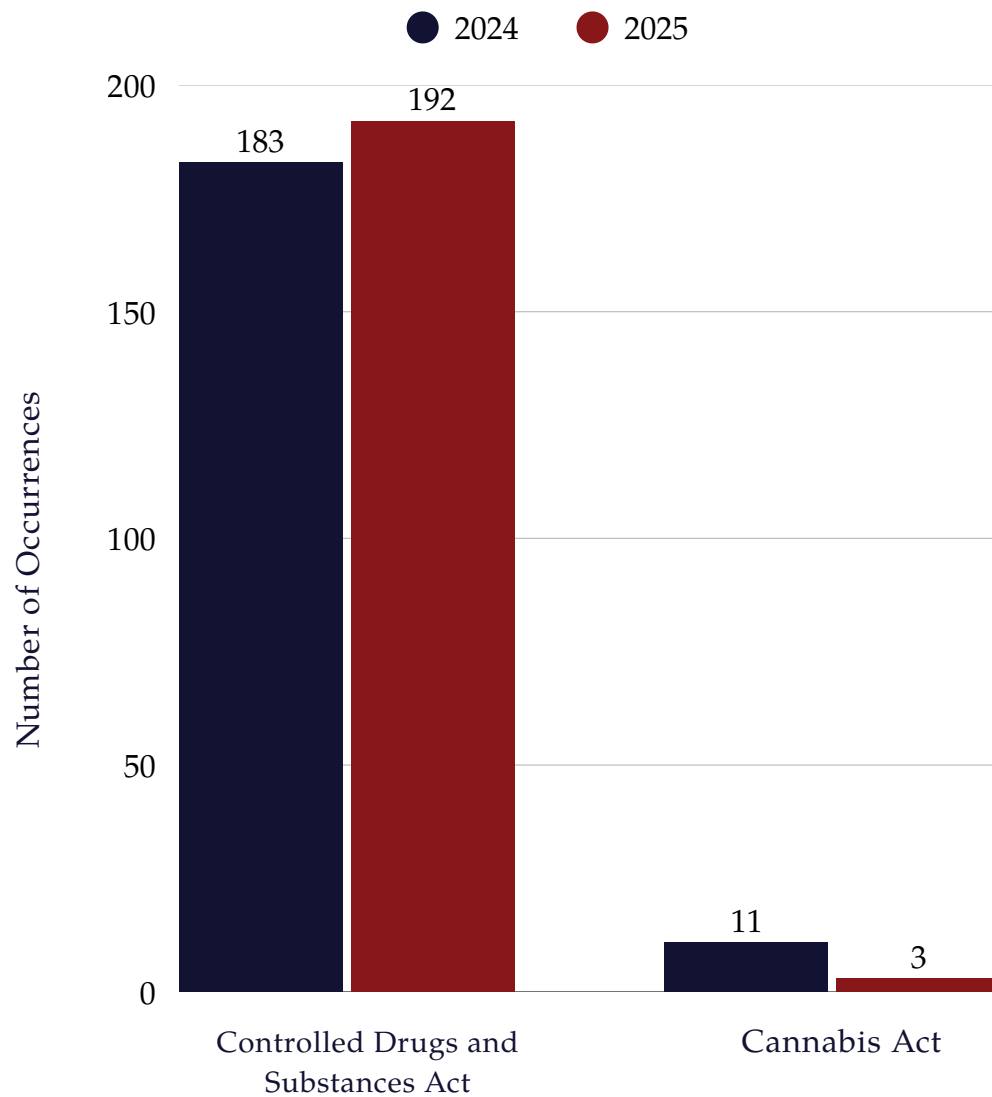
Overview of Criminal Code Offences

Other Criminal Code Violations



*Graph represents selected categories and is not a total accounting of all other criminal code violations.

Controlled Drugs and Substances Act & Cannabis Act



Cyber and Hate Crimes

	2024				2025				% Variance	
	Occurrences		Clearance		Occurrences		Clearance		Occurrence Rate	Clearance Rate
	Number	Rate / 100,000 pop.	Number	Rate	Number	Rate / 100,000 pop.	Number	Rate		
Cyber Crime	751	472.3	229	30.5%	592	369.7	143	24.2%	-21.7%	-20.6%
Hate Crime	22	13.8	7	31.8%	18	11.2	5	27.7%	-18.8%	-12.9%

¹A cyber crime is “a criminal offence involving a computer as the object of the crime or the tool used to commit a material component of the offence.” (Canadian Police College as quoted in Canadian Centre for Justice Statistics – Statistics Canada. 2010. Uniform Crime Reporting Incident-Based Survey. Ottawa.)

²A hate crime is “a criminal violation motivated by hate, based on race, national or ethnic origin, language, colour, religion, sex, age, mental or physical disability, sexual orientation or any other similar factor.” (Canadian Centre for Justice Statistics – Statistics Canada. 2010. Uniform Crime Reporting Incident-Based Survey. Ottawa.)

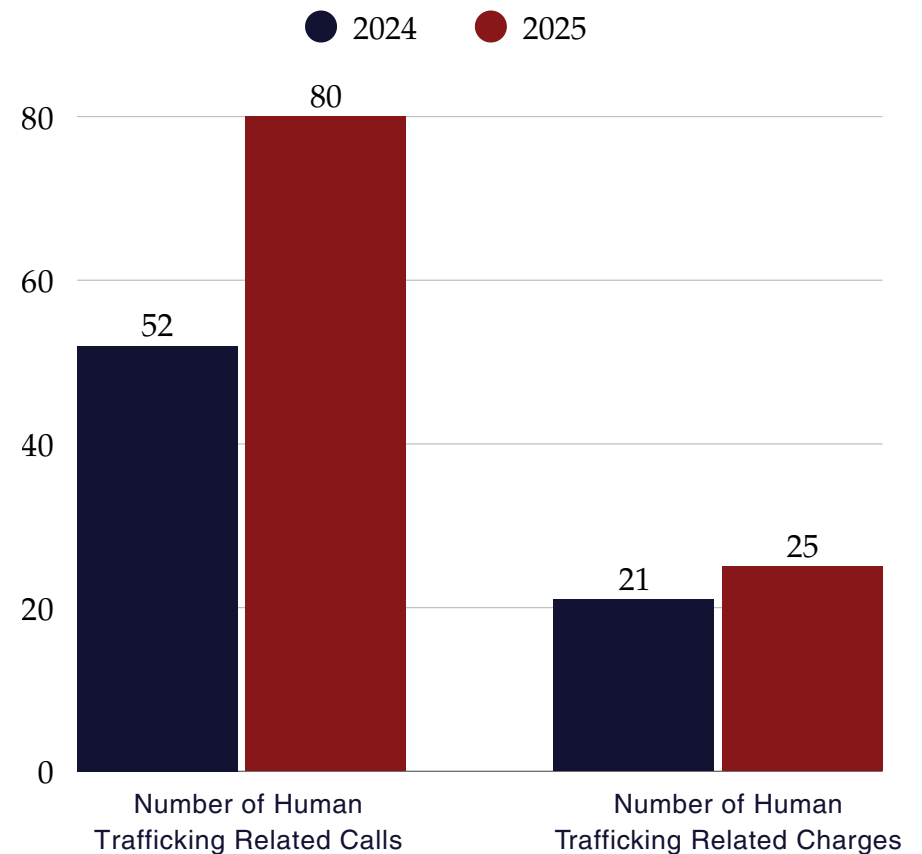
Human Trafficking



In 2025, the Service continued to align its efforts with the Guelph City Council's 2023 declaration of intimate partner violence (IPV) as an epidemic, while advancing key strategic priorities related to human trafficking (HT) and victim safety. Building on the unit's formation in 2024, additional investigative HT/IPV positions were added in 2025 bringing the unit to a total of eight officers.

This increased resourcing contributed to a rise in proactive human trafficking investigations, resulting in a corresponding increase in identified incidents and charges laid, as well as expanded bail compliance checks. Prevention and awareness remained a priority through strengthened collaboration with community partners including the development of a human trafficking awareness video and an increase in community presentations.

A significant collaborative achievement this year was the delivery of human trafficking and online safety training to more than 900 Catholic School Board staff, underscoring the importance of education-based prevention and cross-sector collaboration in protecting children and youth.



Motor Vehicle Collisions



Motor Vehicle Collisions	2024		2025		% Variance in Rate
	Number	Rate / 100,000 pop.	Number	Rate / 100,000 pop.	
Fatality	2	1.3	5	3.1	138.5%
Personal Injury	302	189.9	265	165.5	-12.8%
Property Damage Only*	2,591	1,629.50	2,596	1,621.50	-0.5%

*Includes both collisions reported on scene and self-reported collisions. Source: Accident Support Services Intl.

Highway Traffic Act Offences



	2024		2025		% Variance in Rate
	Number	Rate / 100,000 pop.	Number	Rate / 100,000 pop.	
Total Highway Traffic Act (HTA) Violations	4,881	3,069.6	7,712	4,816.9	56.9%
Drive Motor Vehicle, No Currently Validated Permit	98	61.6	317	198.0	221.4%
Drive Motor Vehicle, No Licence	88	55.3	187	116.8	111.2%
Drive Under Suspension	236	148.4	224	139.9	-5.7%
Drive, Hand-Held Communication Device	71	44.6	128	79.9	79.1%
Seat Belt Violation	69	43.4	89	55.6	28.1%
Speeding	2,309	1451.9	2,873	1794.5	23.6%
Careless Driving	266	167.3	340	212.4	27.0%
Red Light - Fail to Stop	124	78.0	189	118.0	51.3%
Disobey Stop Sign	84	52.8	169	105.6	100%

Annual Use of Force

A Use of Force Report is submitted when:

- ➔ A handgun is drawn in the presence of a member of the public (excludes a member of a police service who is on duty), an officer points a firearm at a person or discharges a firearm.
- ➔ A member uses a weapon other than a firearm on another person
- ➔ A member uses physical force on another person, not in relation to training, that results in an injury requiring medical attention; and
- ➔ When a member deploys a Conducted Energy Weapon (CEW) on a person or an animal or displays the CEW in the Demonstrated Force Presence Mode.

When an officer has displayed or applied force or utilized a force option as defined by regulation, the officer must complete and submit an electronic Use of Force Report.

A Provincial Use of Force Report is delivered by the Service to the Ministry and Community Safety and Correctional Services annually.

The Guelph Police Service received more than 86,000 calls for service in 2025. Guelph Police officers attended to 104 incidents where either one or more levels of force were required to bring the situation to resolution. Members of the Guelph Police Service used 213 varying Use of Force options during these 104 incidents. Based on the province's seven (7) race categories, 169 subjects involved were identified as follows: Black 22, East/Southeast Asian 12, Indigenous 3, Latino 1, Middle Eastern 7, South Asian 10, and White 114.

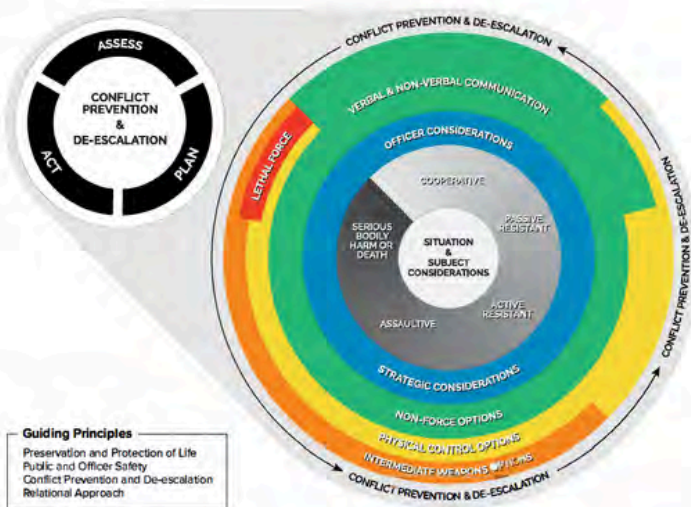
All Use of Force reports have been reviewed. Officers are trained to assess each situation and respond with the most appropriate use of force option considering officer safety, public safety, and subject safety.

Guelph Police officers, on a very regular basis, are faced with incidents of a serious and potentially dangerous nature. By providing multiple Use of Force options to our officers, we allow choices in how to deal with ever-changing circumstances. Officers can select and transition between their Use of Force options thereby achieving the most effective outcomes. Our officers continue to demonstrate that common sense, good judgment and effective training are the key to our success in policing the City of Guelph.

Annual Use of Force Call Types

The types of calls for service resulting in use of force vary. Such calls could include officer-initiated contact with the public and citizen generated calls for service and assistance.

USE OF FORCE - OFFICER INTERACTION



Guiding Principles

- Preservation and Protection of Life
- Public and Officer Safety
- Conflict Prevention and De-escalation
- Relational Approach

The officer continuously assesses the interactions and selects the most reasonable option(s) relative to the subject and circumstances given available resources and time.

Call Generated by Call Type	2025			Total
	Citizen Complaint	Officer Initiated	Assist Other Police Service	
Active Attacker	1			1
Arrest R&PG	1	1		2
Arrest - Warrant	1	1		2
Assault	4	1		5
Attempt Murder	1			1
Barricaded Subject	1			1
Breach of Order		1		1
Break and Enter	3			3
CDSA Warrant		2		2
Check Residence	2			2
Dangerous Driving		1		1
Death Threat	1			1
Disturbance	1			1
Domestic Dispute	8			8
Drugs		2		2
Mental Health Act	15	2		17
Mischief	2			2
Motor Vehicle Collision	1			1
Neighbour Dispute	1			1
Pursuit		1		1
Robbery	3			3
Stolen Vehicle			1	1
Theft	3			3
Trespassing	1			1
Unwanted Person		1		1
Uttering Threats	2			2
Warrant	3	18	9	30
Weapons	8			8
Total	63	31	10	104
Percentage	60.6%	29.8%	9.6%	100.0%

Annual Use of Force

Perceived Subject Race

As of January 1, 2020, under the Anti-Racism Act, police services are required to collect data on the perceived race of those subjects involved in reportable use of force incidents. All information gathered is used to identify, monitor, and address potential racial bias or profiling. The reporting requirements include identifying the perceived race of the subject at the time that force was applied. Race groups are categorized by the Ministry and are divided into seven groups: Black, East/Southeast Asian, Indigenous, Latino, Middle Eastern, South Asian, and White.

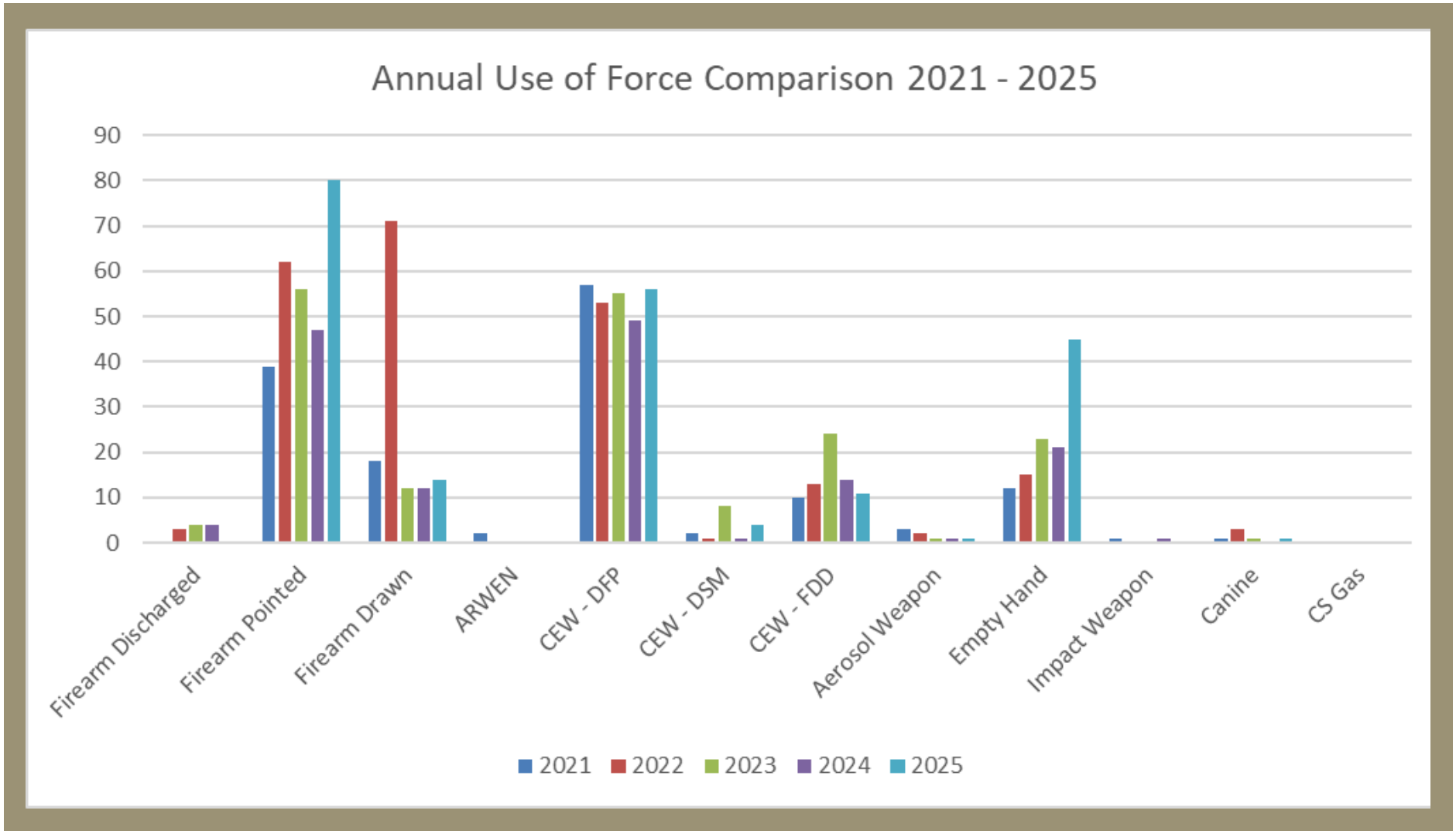
In all reported incidents, 70.4% of subjects reside locally and 29.6% reside outside of jurisdiction.

Race	Local	%	Out of Jurisdiction	%	Total	%
Black	13	7.7%	9	5.3%	22	13.0%
East/Southeast Asian	7	4.1%	5	3.0%	12	7.1%
Indigenous	3	1.8%	0	0.0%	3	1.8%
Latino	1	0.6%	0	0.0%	1	0.6%
Middle Eastern	6	3.6%	1	0.6%	7	4.1%
South Asian	1	0.6%	9	5.3%	10	5.9%
White	88	52.1%	26	15.4%	114	67.5%
TOTAL	119	70.4%	50	29.6%	169	100%

Type of Force	2021	2022*	2023	2024	2025
Firearm Discharged	0	3	4	4	0
Firearm Pointed	39	62	56	47	80
Firearm Drawn	18	71	12	12	14
ARWEN	2	0	0	0	0
CEW - DFP	57	53	55	49	56
CEW - DSM	2	1	8	1	4
CEW - FDD	10	13	24	14	11
Aerosol Weapon	3	2	1	1	1
Empty Hand	12	15	23	21	46
Impact Weapon	1	0	0	1	0
Canine	1	3	1	0	1
CS Gas	0	0	0	0	0
Total Levels of Force	145	223	184	150	213
Total # of Incidents	80	100	107	89	104

*In 2022, all levels of forced used during an incident related to firearms required full reporting. Whereas previously and currently, only the highest level is reported. For example, in a scenario where a firearm was both drawn and pointed in one incident, prior and current to 2022, only one level of force would be reported for the incident (for the firearm pointed, the highest level of force). In 2022 only, this scenario would result in two use of force levels of force being reported for the incident (one for the firearm drawn and one for the firearm pointed).

Annual Use of Force Comparison



Use of Force - 2025 Incident Breakdown

Number	Occurrence Type	Initiated By	Weapon Carried by Subject / Behaviour	Officer Response / Force Option Used	Number of Subjects & Perceived Race	Local/Out of Jurisdiction	Injury to Officer?	Injury to Subject?
1	Disturbance	Citizen Complaint	Unwanted Person, Active Resistance, Uttering Threats	Aerosol Weapon, Empty Hand	White	OJUR	Yes – Minor	No
2	Traffic Incident	Officer Initiated	Active Resistance, Fleeing from Police	Firearm Pointed	Black	OJUR	No	No
3	Weapons	Citizen Complaint	TRU - Weapons Potential	Firearm Drawn	White (2)	Local	No	No
4	Wellness / Safety Check	Citizen Complaint	Threatening to Harm Themselves, Resisting Arrest	CEW-DFP, Empty Hand Hard	White	Local	No	Yes - Minor (Scraped Elbow)
5	Stolen Vehicle	Officer Initiated	Fleeing from Police, Active Resistance, Weapons Potential, History of Violence	Empty Hand Hard, CEW - FDD, CEW DSM	White	Local	No	No
6	Weapons	Citizen Complaint	ROPE* - Weapons Potential, Subject Known to be Violent	Firearm Pointed	White	OJUR	No	No

*reflects member secondment to Provincial Repeat Offender Parole Enforcement (ROPE) Unit

Use of Force - 2025 Incident Breakdown

Number	Occurrence Type	Initiated By	Weapon Carried by Subject / Behaviour	Officer Response / Force Option Used	Number of Subjects & Perceived Race	Local/Out of Jurisdiction	Injury to Officer?	Injury to Subject?
7	Weapons	Citizen Complaint	Weapons Potential	CEW - DFP, Firearm Pointed, Firearm Drawn	White (2)	Local	No	No
8	Violent Crime	Citizen Complaint	TRU - Searching for Violent Subject	Firearm Drawn	N/A - (Firearms drawn while conducting a methodical clearing of apartments - In presence of public)	N/A	No	No
9	Intimate Partner Violence	Citizen Complaint	Active Resistance	CEW - DFP	White	Local	No	No
10	Execute Warrant	Assist Other Service	TRU - Weapons Potential	Firearm Pointed	South Asian (2) East/Southeast Asian (5)	OJUR	No	No
11	Weapons	Citizen Complaint	Weapons Potential, Uttering Threats, Active Resistance	Firearm Drawn, Firearm Pointed, Empty Hand Hard	White	OJUR	No	No
12	Traffic Incident	Officer Initiated	Active Resistance, Assaulting Police	CEW - DFP, Empty Hand Hard	White	Local	Yes - (Officer bitten and punched during arrest.)	No

Use of Force - 2025 Incident Breakdown

Number	Occurrence Type	Initiated By	Weapon Carried by Subject / Behaviour	Officer Response / Force Option Used	Number of Subjects & Perceived Race	Local/Out of Jurisdiction	Injury to Officer?	Injury to Subject?
13	Weapons	Citizen Complaint	Weapons Potential	Firearm Drawn, Firearm Pointed	Black (1) Black (1)	Local OJUR	No	No
14	Weapons	Citizen Complaint	Weapons Potential	CEW - DFP, Firearm Drawn, Empty Hand Hard	White	Local	No	No
15	Property Crime	Citizen Complaint	Active Resistance, Weapons Potential	Firearm Pointed	East/Southeast Asian	Local	No	No
16	Family / Neighbour Dispute	Citizen Complaint	Active Resistance	CEW - DFP	White	Local	No	No
17	Intimate Partner Violence	Citizen Complaint	Weapons Potential	CEW - DFP	White	Local	No	No
18	Weapons	Citizen Complaint	TRU - Weapons Potential, Subject Threatening to Harm Themselves	CEW - DFP, Firearm Pointed, Empty Hand Hard	White	OJUR	No	No
19	Person Stop	Officer Initiated	ROPE* - Weapons Potential, Subject Known to be Violent, Active Resistance	Firearm Pointed, Empty Hand Hard	Black	OJUR	No	No

*reflects member secondment to Provincial Repeat Offender Parole Enforcement (ROPE) Unit

Use of Force - 2025 Incident Breakdown

Number	Occurrence Type	Initiated By	Weapon Carried by Subject / Behaviour	Officer Response / Force Option Used	Number of Subjects & Perceived Race	Local/Out of Jurisdiction	Injury to Officer?	Injury to Subject?
20	Warrant	Assist Other Service	TRU - Weapons Potential	Firearm Pointed	White (6)	Local	Yes - Minor	Yes - (Pre-existing heart condition, suffered panic attack. Cleared from hospital with no injuries.)
21	Stolen Vehicle	Citizen Complaint	Subject Known to be Violent, Fleeing from Police	CEW - DFP, Firearm Pointed	White	Local	No	Yes - (Injuries resulted from collision.)
22	Arrest Warrant	Citizen Complaint	Violent, Assaultive Towards Police	CEW - FDD, Empty Hand Hard	Indigenous	Local	No	Yes - Minor (EMS ensuring vitals stable after CEW.)
23	Execute Warrant	Assist Other Service	TRU - Subject Known to be Violent	Empty Hand Hard, Firearm Pointed	White (2)	OJUR	No	No

Use of Force - 2025 Incident Breakdown

Number	Occurrence Type	Initiated By	Weapon Carried by Subject / Behaviour	Officer Response / Force Option Used	Number of Subjects & Perceived Race	Local/Out of Jurisdiction	Injury to Officer?	Injury to Subject?
24	Intimate Partner Violence	Citizen Complaint	Active Resistance	CEW - DFP	White	OJUR	No	No
25	Violent Crime	Citizen Complaint	Assaultive, Active Resistance	CEW - FDD, Empty Hand Hard, Firearm Pointed, CEW - DSM	White	Local	Yes - (Officer dislocated thumb.)	No
26	Stolen Vehicle	Assist Other Service	TRU - Subject Known to be Violent, Weapons Potential	CEW - DFP, Firearm Pointed, Empty Hand Hard	White	OJUR	No	No
27	Intimate Partner Violence	Citizen Complaint	TRU - Weapons Potential	CEW - DFP, Empty Hand Hard	White	Local	No	No
28	Federal/ Provincial Statutes	Citizen Complaint	Weapons Potential	Firearm Pointed	White (2)	OJUR	No	No
29	Weapons	Citizen Complaint	Assaultive	Empty Hand Hard, Firearm Drawn, Firearm Pointed	Middle Eastern (1) White (2)	Local	No	No

Use of Force - 2025 Incident Breakdown

Number	Occurrence Type	Initiated By	Weapon Carried by Subject / Behaviour	Officer Response / Force Option Used	Number of Subjects & Perceived Race	Local/Out of Jurisdiction	Injury to Officer?	Injury to Subject?
30	Active Attacker	Citizen Complaint	TRU - Weapons Potential, Member of Public Being Held Against Their Will	CEW - DFP, Firearm Pointed, Empty Hand Hard	Black	Local	No	No
31	Execute Warrant	Officer Initiated	TRU - Weapons Potential	CEW - DFP, Firearm Pointed	White	Local	No	No
32	Execute Warrant	Officer Initiated	TRU - Subject Known to be Violent	Firearm Pointed	White (2)	Local	No	No
33	Weapons	Citizen Complaint	TRU - Weapons Potential, Subject Threatening to Harm Themselves	CEW - FDD, CEW - DSM, Firearm Pointed, Empty Hand Hard	White	Local	No	No
34	Weapons	Citizen Complaint	Weapons Potential	Firearm Pointed, CEW - DFP	East/Southeast Asian	Local	No	No
35	Person In Crisis	Citizen Complaint	Subject Threatening Harm to Themselves, Active Resistance	Empty Hand Hard, CEW - DFP	White	Local	No	No

Use of Force - 2025 Incident Breakdown

Number	Occurrence Type	Initiated By	Weapon Carried by Subject / Behaviour	Officer Response / Force Option Used	Number of Subjects & Perceived Race	Local/Out of Jurisdiction	Injury to Officer?	Injury to Subject?
36	Weapons	Citizen Complaint	Weapons Potential	CEW - DFP	East/Southeast Asian	Local	No	No
37	Execute Warrant	Officer Initiated	ROPE* - Weapons Potential	CEW - DFP	Black	OJUR	No	No
38	Barricaded Subject	Citizen Complaint	TRU - Weapons Potential	CEW - DFP, Firearm Pointed, Empty Hand Hard	Black	Local	No	No
39	Wellness/Safety Check	Citizen Complaint	Subject Threatening Harm to Police, Active Resistance	CEW - DFP	White	Local	No	No
40	Wellness/Safety Check	Officer Initiated	TRU - Murder Investigation	CEW - DFP, Firearm Pointed	N/A - (For officer safety, use of force options were used to clear the units)	N/A	No	No
41	Weapons	Citizen Complaint	Assaultive, Weapons Potential	CEW - DFP	White	Local	No	No

*reflects member secondment to Provincial Repeat Offender Parole Enforcement (ROPE) Unit

Use of Force - 2025 Incident Breakdown

Number	Occurrence Type	Initiated By	Weapon Carried by Subject / Behaviour	Officer Response / Force Option Used	Number of Subjects & Perceived Race	Local/Out of Jurisdiction	Injury to Officer?	Injury to Subject?
42	Execute Warrant	Assist Other Service	TRU - Weapons Potential	Firearm Pointed	White	OJUR	No	No
43	Family/ Neighbour Dispute	Citizen Complaint	Weapons Potential, Uttering Threats	CEW - DFP	White	Local	No	No
44	Execute Warrant	Citizen Complaint	Fleeing from Police, Active Resistance	CEW - DFP, Empty Hand Hard	White	Local	No	No
45	Execute Warrant	Assist Other Service	TRU - Weapons Potential	Firearm Pointed	South Asian (4)	OJUR	No	No
46	Execute Warrant	Citizen Complaint	Weapons Potential	Firearm Pointed	Black	OJUR	No	No
47	Person In Crisis	Citizen Complaint	Weapons Potential	CEW - DFP, Firearm Pointed	White	Local	No	No
48	Execute Warrant	Assist Other Service	TRU - Weapons Potential	Firearm Pointed	White (2)	OJUR	No	No
49	Property Crime	Citizen Complaint	Active Resistance, Assaultive	CEW - DFP	White	Local	No	No

Use of Force - 2025 Incident Breakdown

Number	Occurrence Type	Initiated By	Weapon Carried by Subject / Behaviour	Officer Response / Force Option Used	Number of Subjects & Perceived Race	Local/Out of Jurisdiction	Injury to Officer?	Injury to Subject?
50	Wellness/Safety Check	Citizen Complaint	Active Resistance, Assaultive	CEW - DFP	Indigenous	Local	No	No
51	Property Crime	Citizen Complaint	Assaultive Towards Police, Fleeing from Police	CEW - FDD (not successful)	South Asian	OJUR	No	No
52	Intimate Partner Violence	Citizen Complaint	Assaultive, Fleeing from Police, Active Resistance	Empty Hand Hard	White	Local	No	Yes - SIU notification
53	Person In Crisis	Citizen Complaint	Threatening to Harm Themselves	CEW - DFP	White	Local	No	No
54	Breach of Order	Officer Initiated	Active Resistance	CEW - DFP, Empty Hand Hard	White	Local	No	No
55	Weapons	Citizen Complaint	Weapons Potential	Firearm Pointed, CEW - DFP	East/Southeast Asian	Local	No	No
56	Execute Warrant	Officer Initiated	TRU - Weapons Potential, Active Resistance	Firearm Pointed, Empty Hand Hard, CEW - FDD	White	OJUR	No	No
57	Execute Warrant	Officer Initiated	TRU - Weapons Potential	Firearm Pointed	White	OJUR	No	No

Use of Force - 2025 Incident Breakdown

Number	Occurrence Type	Initiated By	Weapon Carried by Subject / Behaviour	Officer Response / Force Option Used	Number of Subjects & Perceived Race	Local/Out of Jurisdiction	Injury to Officer?	Injury to Subject?
58	Execute Warrant	Officer Initiated	TRU - Weapons Potential	Firearm Pointed	White (2)	Local	No	No
59	Execute Warrant	Officer Initiated	TRU - Weapons Potential	Firearm Pointed	White (4)	OJUR	No	No
60	Execute Warrant	Officer Initiated	TRU - Weapons Potential, Active Resistance	Firearm Pointed, Empty Hand Hard	White (6)	Local	No	No
61	Execute Warrant	Assist Other Service	TRU - Subject Known to be Violent, Suspect in Shooting	Firearm Pointed, Empty Hand Hard	South Asian	OJUR	No	No
62	Execute Warrant	Assist Other Service	TRU - Suspects in Shooting, Weapons Potential	Firearm Pointed	Black (1) South Asian (1)	OJUR	No	No
63	Execute Warrant	Officer Initiated	TRU - Weapons Potential	Firearm Pointed	White (2)	Local	No	No
64	Arrest Warrant	Officer Initiated	ROPE* - Weapons Potential	Firearm Pointed	Black	OJUR	No	No
65	Barricaded Subject	Citizen Complaint	TRU - Weapons Potential, Assaultive	CEW - DFP, Empty Hand Hard	White	Local	No	No

*reflects member secondment to Provincial Repeat Offender Parole Enforcement (ROPE) Unit

Use of Force - 2025 Incident Breakdown

Number	Occurrence Type	Initiated By	Weapon Carried by Subject / Behaviour	Officer Response / Force Option Used	Number of Subjects & Perceived Race	Local/Out of Jurisdiction	Injury to Officer?	Injury to Subject?
66	Intimate Partner Violence	Officer Initiated	Active Resistance	CEW - DFP	White	Local	No	No
67	Arrest Warrant	Officer Initiated	TRU - Subject Known to be Violent, Weapons Potential	Firearm Pointed	Black	OJUR	No	No
68	Person In Crisis	Citizen Complaint	Subject Threatening to Harm Self	CEW - FDD, Firearm Pointed, CEW - DFP, Empty Hand Hard	White	Local	No	Yes - Minor (Stitches)
69	Execute Warrant	Officer Initiated	TRU - Subject Known to be Violent, Weapons Potential	Firearm Pointed, Empty Hand Hard	White (4)	Local	No	No
70	Execute Warrant	Officer Initiated	TRU - Subject Known to be Violent, Weapons Potential	Firearm Pointed	White (3) South Asian (1)	Local	No	No
71	Weapons	Citizen Complaint	TRU - Weapons Potential	CEW - DFP, Firearm Pointed	White (3)	Local	No	No
72	Property Crime	Citizen Complaint	Weapons Potential	CEW - DFP	White	Local	No	No

Use of Force - 2025 Incident Breakdown

Number	Occurrence Type	Initiated By	Weapon Carried by Subject / Behaviour	Officer Response / Force Option Used	Number of Subjects & Perceived Race	Local/Out of Jurisdiction	Injury to Officer?	Injury to Subject?
73	Traffic Incident	Officer Initiated	Fleeing from Police, Weapons Potential	CEW - DFP, Empty Hand Hard	White	OJUR	No	No
74	Barricaded Subject	Citizen Complaint	TRU - Uttering Threats, Weapons Potential	Firearm Pointed, CEW - FDD	White	Local	No	No
75	Execute Warrant	Officer Initiated	TRU - Subjects Known to be Violent, Weapons Potential	Firearm Pointed	White (1) White (1)	Local OJUR	No	No
76	Execute Warrant	Officer Initiated	TRU - Subjects Known to be Violent, Weapons Potential	Firearm Pointed	White (2) Black (2) Middle Eastern	Local	No	No
77	Property Crime	Citizen Complaint	TRU - Possible Drug Trafficking	CEW - DFP, Firearm Pointed	White (5)	Local	No	No
78	Execute Warrant	Officer Initiated	TRU - Subjects Known to be Violent, Weapons Potential	Firearm Pointed, Empty Hand Hard	Middle Eastern (1) White (3)	Local	No	No
79	Weapons	Citizen Complaint	Weapons Potential, Uttering Threats	Canine, Empty Hand Hard	White	Local	No	Yes - Minor

Use of Force - 2025 Incident Breakdown

Number	Occurrence Type	Initiated By	Weapon Carried by Subject / Behaviour	Officer Response / Force Option Used	Number of Subjects & Perceived Race	Local/Out of Jurisdiction	Injury to Officer?	Injury to Subject?
80	Violent Crime	Citizen Complaint	Weapons Potential	CEW - DFP, Firearm Pointed	White	Local	No	No
81	Weapons	Citizen Complaint	Weapons Potential	Firearm Drawn	Indigenous	Local	No	No
82	Person In Crisis	Citizen Complaint	Assaultive, Threatening to Harm Themselves	CEW - DFP, Firearm Pointed	East/Southeast Asian	Local	No	No
83	Execute Warrant	Officer Initiated	TRU - Weapons Potential	Firearm Pointed, Empty Hand Hard	White (3) Black (2)	Local	No	No
84	Barricaded Subject	Citizen Complaint	TRU - Subject Threatening to Harm Themselves, Active Resistance	CEW - DFP, Empty Hand Hard, Firearm Pointed	White	Local	No	No
85	Execute Warrant	Officer Initiated	TRU - Weapons Potential, Robbery	Firearm Pointed, Empty Hand Hard	White (2)	Local	No	No
86	Execute Warrant	Officer Initiated	TRU - Weapons Potential, Robbery	Firearm Pointed, Empty Hand Hard	White	OJUR	No	No
87	Arrest Failing to Comply	Citizen Complaint	Active Resistance	Empty Hand Hard	White	OJUR	No	Yes – SIU notification

Use of Force - 2025 Incident Breakdown

Number	Occurrence Type	Initiated By	Weapon Carried by Subject / Behaviour	Officer Response / Force Option Used	Number of Subjects & Perceived Race	Local/Out of Jurisdiction	Injury to Officer?	Injury to Subject?
88	Weapons	Citizen Complaint	Weapons Potential	CEW - DFP, Firearm Drawn, Firearm Pointed	White	OJUR	No	No
89	Weapons	Citizen Complaint	TRU - Discharged Personal Weapon, Subject Threatening to Harm Themselves	Firearm Pointed	White	Local	No	No
90	Police Custody Related	Officer Initiated	Active Resistance	CEW - DSM, Empty Hand Hard	Black	OJUR	Yes - Minor	No
91	Wellness/ Safety Check	Citizen Complaint	TRU - Subject Threatening to Harm Themselves	Empty Hand Hard, CEW - DFP	White	Local	No	No
92	Traffic Incident	Officer Initiated	Active Resistance	CEW - DFP	East/Southeast Asian	Local	No	No
93	Property Crime	Citizen Complaint	Assaultive Towards Police, Active Resistance	CEW - FDD, Empty Hand Hard	White	Local	No	Yes - Minor
94	Weapons	Citizen Complaint	TRU - Weapons Potential	CEW - DFP, Firearm Pointed	White	Local	No	No
95	Weapons	Citizen Complaint	Weapons Potential	Firearm Pointed, Empty Hand Hard	White	OJUR	No	No

Use of Force - 2025 Incident Breakdown

Number	Occurrence Type	Initiated By	Weapon Carried by Subject / Behaviour	Officer Response / Force Option Used	Number of Subjects & Perceived Race	Local/Out of Jurisdiction	Injury to Officer?	Injury to Subject?
96	Execute Warrant	Officer Initiated	TRU - Weapons Potential	Firearm Pointed	White (1) White (1)	Local OJUR	No	No
97	Weapons	Citizen Complaint	Weapons Potential	Firearm Drawn, Empty Hand Hard	Middle Eastern	OJUR	No	No
98	Weapons	Citizen Complaint	Weapons Potential	Firearm Pointed	Middle Eastern (3)	Local	No	No
99	Weapons	Citizen Complaint	Weapons Potential	Firearm Pointed, Empty Hand Hard	Black	Local	No	No
100	Execute Warrant	Assist Other Service	TRU - Weapons Potential	Firearm Pointed	Black (3)	Local	No	No
101	Family/ Neighbour Dispute	Citizen Complaint	Subject Known to be Violent	CEW - DFP	White	Local	No	No
102	Family/ Neighbour Dispute	Citizen Complaint	Weapons Potential	Firearm Pointed	Black (2) East/Southeast Asian (1)	Local	No	No
103	Weapons	Citizen Complaint	Weapons Potential, Uttering Threats	Firearm Pointed, CEW - DFP	White (2)	Local	No	No
104	Person Stop	Officer Initiated	Active Resistance, Weapons Potential	CEW - FDD	Latino	Local	No	No



Contact Details

Non-emergency: 519-824-1212

TTY: 1-866-513-8062

Emergency: 9-1-1

Address: 15 Wyndham Street South
Guelph, ON N1H 4C6

Website: www.guelphpolice.ca

Connect with us!



@GuelphPoliceService